



Globe Valve (Size : 1/2" to 36")



Body Type	: 2 Way / 3 Way / Angle / Jacketed
Body Materials	: All Cast-able Materials Forged available up to 4" in any class and higher sizes specifically for 2500# and higher.
End Connections	: Flanged (Integral & Separable), Screwed, Butt weld and Socket weld
Bonnet	: Standard, Extended, Cryogenic & Bellow Sealed
Guiding	: 2 - top heavy duty stem guides
Gland Packing	: PTFE, Braided PTFE, Grafoil, Fugitive Emission, Vaccum
Gaskets	: PTFE, Spiral Grafoil, Glass filled S S
Seat Ring	: Clamped - in self aligned
Plug	: Line seat contact area, large diameter stem is an integral part
Charactristics	: Equal Percentage, Linear and Quick-open (On - Off)
Rangeability	: 50 : 1
Special Trims	: CavFlo, MegaFlo, dB Plates, VCFlo
Actuator	: Spring Cylinder Linear, Fully Field Reversible
Air pressure	: 2.0 to 10.0 Bar
Shut off class	: With Metal seat - ANSI IV or V and replaceable Soft seat - ANSI VI

Butterfly Valve (Size : 2" to 72")

Body Type	: One Piece Straight Through / Jacketed
Body Materials	: All Cast-able Materials
End Connections	: Wafer, Semi-Lugged, Full Lugged & Flanged
Bonnet	: Standard, Extended & Cryogenic.
Gland Packing	: PTFE, Braided PTFE, Grafoil, Vaccum
Gaskets	: PTFE, Spiral Grafoil, Glass filled S S
Seat Ring	: Clamped - in self aligned
Disc	: Double Eccentric Cammed
Shaft	: Splined - No transmission loss or dead band Stainless Steel / 17 - 4PH
Charactristics	: Equal Percentage, Linear and Quick-open (On - Off)
Actuator	: Spring Cylinder Rotary, Fully field reversible
Air pressure	: 2.0 to 10.0 Bar
Shut off class	: With Metal seat - ANSI IV and replaceable Soft seat - ANSI VI



Vee-Notch Ball Valve (Size : 1" to 24")



Body Type	: One Piece Straight Through / Jacketed
Body Materials	: All Cast-able Materials
End Connections	: Wafer as well as Flanged (Integral & Separable Flange)
Bonnet	: Standard, Extended & Cryogenic.
Gland Packing	: PTFE, Braided PTFE, Grafoil, Vaccum
Gaskets	: PTFE, Spiral Grafoil, Glass filled S S
Seat Ring	: Clamped-in Self Aligned Bi-directional Seal
Ball	: Segemented V - Notch Ball
Shaft	: Splined - No transmission loss or dead band Stainless Steel / 17 - 4PH
Charactristics	: Equal Percentage, Linear and Quick-open (On - Off)
Actuator	: Spring Cylinder Rotary, Fully field reversible
Air pressure	: 2.0 to 10.0 Bar
Shut off class	: With Metal seat - ANSI IV and replaceable Soft seat - ANSI VI

Full Bore Ball Valve (Size : 1" to 24")

Body Type	: Two Piece / Three Piece / Floating / Trunnion Mounted / Jacketed
Body Materials	: All Cast-able Materials
End Connections	: Flanged, Socket & Butt Welded
Bonnet	: Standard, Extended & Cryogenic.
Gland Packing	: PTFE, Braided PTFE, Grafoil, Vacuum
Gaskets	: PTFE, Spiral Grafoil, Glass filled S S
Shaft	: Splined - No transmission loss or dead band Stainless Steel / 17 - 4PH
Characteristics	: On - Off / Approximate throttling with Positioner.
Actuator	: Pneumatic Spring Rotary, Fully field reversible
Supply	: Air pressure 2.0 to 10.0 Bar
Shut off class	: ANSI VI with Teflon Seat, ANSI IV with Metal Seat



Eccentric Plug Valve (Size : 1" to 24")



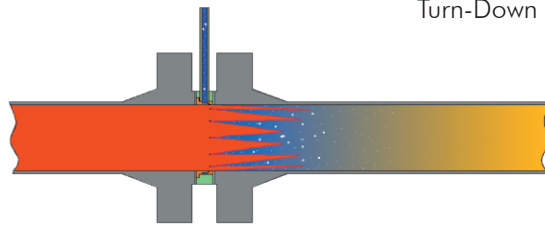
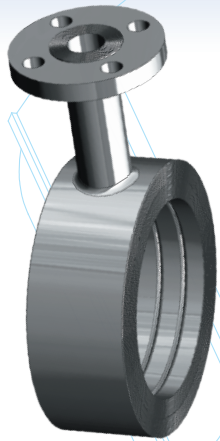
Body Type	: Straight Through / Jacketed (Also known as "Rotary Globe Type")
Body Materials	: All Cast-able Materials
End Connections	: Flanged, Wafer
Bonnet	: Standard, Extended & Cryogenic.
Gland Packing	: PTFE, Braided PTFE, Grafoil, Vacuum
Gaskets	: PTFE, Spiral Grafoil, Glass filled S S
Seat Ring	: Clamped - in, Self Aligned with Reduced Cv options
Plug	: SS 304, 316, 304L, 316L, Hastelloy C and other Cast-able materials
Shaft	: Splined - No transmission loss or dead band Stainless Steel / 17 - 4PH
Characteristics	: Equal Percentage, Linear.
Actuator	: Pneumatic Spring Rotary, Fully field reversible
Supply	: Air pressure 2.0 to 10.0 Bar
Shut off class	: ANSI VI with Teflon Seat, ANSI IV with Metal Seat

Flush Bottom

Body Type	: 90° / 120° / 135° / Jacketed
Body Materials	: All Cast-able Materials
End Connections	: As required
Bonnet	: Standard Bolted
Seat	: Replaceable
Plug	: Opens inside the Vessel or Opens inside the Valve Provision for (RTD) Temperature Sensing
Characteristics	: Equal Percentage, Linear and On - Off
Actuator	: Spring Cylinder, fully Field Reversible
Air pressure	: 2.0 to 10.0 Bar



Mini Desuperheater



Available sizes : 1" and Above as per Customer's Steam Line Size

Available rating : 150# to 4500#

Special feature : Stainless Steel sleeve acts as a thermal liner

Turn-Down Ratio : 4:1

Variable Spray Desuperheater

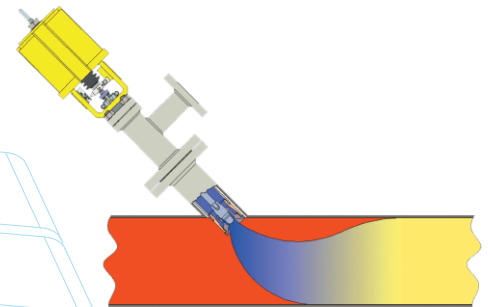
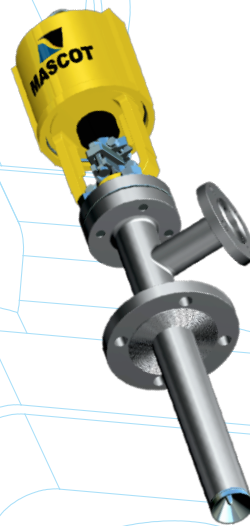
Available Sizes : 0.5" to 4.0" water inlet size.

Rating : 150# to 4500#

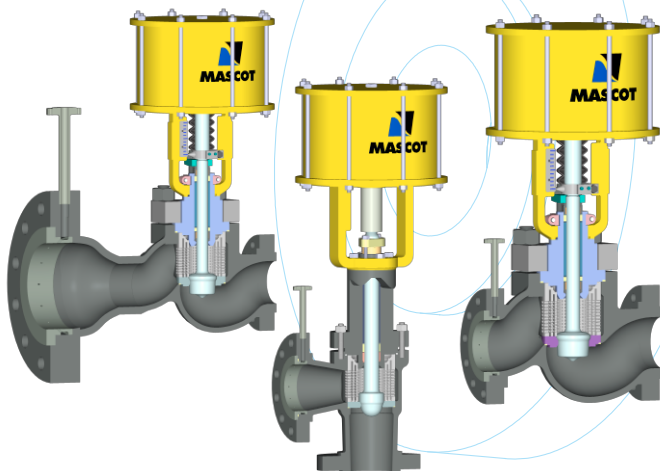
Spray Method : Swirling hollow cone pattern of Atomized water at the injection point.

Mounting Type : Probe at 45° or on long radius bend

Turn-Down Ratio : 40:1



Steam Conditioning Valves



Available Sizes : 0.5" to 36"

Rating : 150# to 4500#

Spray Method : Small Jets of spray through sleeve at the outlet where the steam is highly turbulent for ultimate mixing.

Special Feature : No special trim/expertise needed as MASCOT Steam Conditioning Valves use standard MASCOT Globe control valve components. Water is sprayed at the outlet hence protecting the valve belly from pitting or thermal stresses.

Turn-Down Ratio : 60:1



MASCOT VALVES PVT. LTD.

166 / 167, G I D C, Naroda, Ahmedabad : 382330. India

Phone : +91 79 22821619/22823369, Fax : +91 79 22822430

Email : info@mascotvalves.com / web : www.mascotvalves.com